




Europees Landbouwfonds voor Plattelandsontwikkeling: Europa investeert in zijn platteland








EIP Project Bio-economy Drentsche Aa

Jan Reinder Smeenge, Hoofdweg 62, 9483 PD Zeegse NL
Cell phone +31 651645798 English version

https://ec.europa.eu/info/food-farming-fisheries_nl;
https://ec.europa.eu/info/departments/agriculture-and-rural-development_nl

1

Project Bio-economy Drentsche Aa in short (1/2)

It's about opportunities for agriculture within the context of the National Park Drentsche Aa.

- NP Drentsche Aa is unique in its kind: agriculture side by side with nature, living and recreation
- Striving for harmony and sustainable development: balance between environment, people and economy
- Agricultural target audiences: dairy farms (90), arable farms (40), meat cattle husbandry (10), beekeepers (4 associations)
- Other target audiences: inhabitants (35k), visitors (1.5 M), catering industry, farm shops, food retailers, consumers, schools



2

2

Project Bio-economie Drentsche Aa in short (2/2)

EIP-Agri (European Innovation Project Agri) funded by the European Agricultural Fund for Rural Development ELFPO & POP-3 (Provincial Rural Development Program). Project period Feb 2017 – Feb 2021. Total budget € 163k.

- Objective: preservation of the NP Drentsche Aa identity by a gradual switch from conventional farming to bio-economy
- Development and cooperation for new supply chains of agricultural products in the area
- Work program sets: meat, dairy products, combined harvested crops, honey; communication & extension, demo field
- Case descriptions and revenue models



EU website ELFPO :

https://ec.europa.eu/regional_policy/nl/policy/what/glossary/e/european-agricultural-fund-for-rural-development

3

3

EIP-Project Bio-economy Drentsche Aa on Youtube



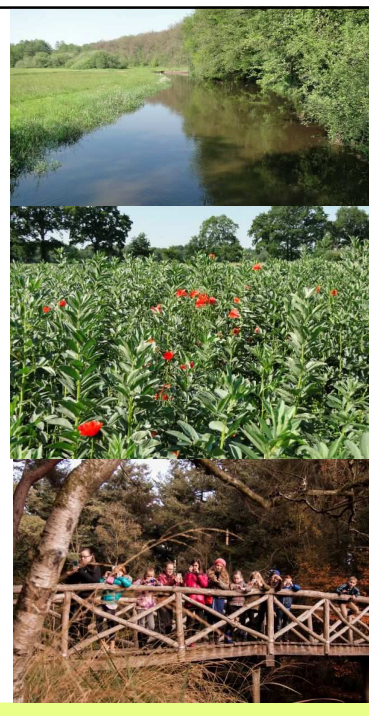
https://www.youtube.com/watch?v=3RmmeS7nq_4

4

4

Areas of interest and topics connected with the Bio-economy project:

- Circular agriculture (Environment)
- Nature inclusive agriculture (Environment and Economy)
- Income position in agriculture (Economy)
- Biodiversity enhancement (Environment)
- Soil and water quality amelioration (Environment)
- Scenery and landscape experience conservation and enhancement (People)
- Environmentally enhanced agricultural output and supply chain development of food products for local markets (People, Economy, Environment)
- Education / training (People and Economy)



5

5

Meat cattle husbandry

What has been worked on?

- Mapping the playing field of meat cattle farmers, nature conservation organisations, market parties, individual consumers and caterers.
- Bottleneck and wants & needs inventory
- Exploration of models for supply chain cooperation
- Development of a revenue model

Conclusions

1. Cooperation is an essential element for meat production and marketing under the Dubbel Drents (Double Drents) label with respect to quality, uniformity and supply continuity for individual consumers and caterers.
2. Cattle husbandry matches very well with nature conservation



6

6

Dairy

What has been worked on?

- Mapping the playing field: dairy farms and their milk flows
- Bottleneck and wants & needs inventory
- Cooperation options with arable crop producers for local fodder supply
- Exploration of dairy product provision for local supply chains and development of a revenue model
- Proposals to advance development of a typical local cheese that represents the Drentsche Aa region with respect to shape, colour, aroma, flavour and taste.

Conclusions

1. There is an interest in outsourced cheese production with own produced milk and local marketing
2. Cooperation between dairy and arable farmers works



7

7

Beekeeping and honey

What has been worked on?

- Met with beekeeper associations in the area and discussed environmental issues
- Bottleneck and wants & needs inventory
- Development of a revenue model for local production and marketing through local retailers and farm shops

Conclusions

1. Interest in production under the Dubbel Drents label with sustained beekeeper's personal identity
2. Urgent need for honey bee-friendly plants, trees and crops



8

8

Combined harvested crops (arable farming)

What has been worked on?

- Built on the experience with the local 'Cereal project for bread'
- Feasibility testing on the cultivation of 'forgotten' and new grains, oil seed rape, field beans, fodder beet (10)
- Research on the possible role of tagetes en field flowers in crop rotations
- Involvement of supply chain partners
- Description of existing and future revenue models

Conclusions:

1. Ample opportunities for bread wheat and other grains for local bakeries, malting barley for local breweries, oil seed rape for regionally produced edible oil
2. Growing opportunities for field beans and fodder beet production in cooperation with neighbouring dairy and meat cattle farmers
3. Local and regional processors are open for cooperation with local farmers
4. Cereals, oil seed rape, tagetes and field flowers are ideal as rest crops in a crop rotation with potato and sugar beet, good for soil improvement, water quality and biodiversity



9

9

Demo Field Wedbroeken, Tynaarlo (NP gate and parking area)

General

- Open for farmers, inhabitants and visitors to the NP
- Excursions in summer
- Annual evaluation on growth, development and yield of a number of combined harvested crops
- Application of nature inclusive cropping systems



Crops

- Bread wheat and spelt
- Malting barley
- Oats
- Rye
- Teff
- Oil seed rape
- Field beans
- Fodder beet
- Tagetes (african marigolds)
- Field flowers



10

10



Een voettekst toevoegen

11